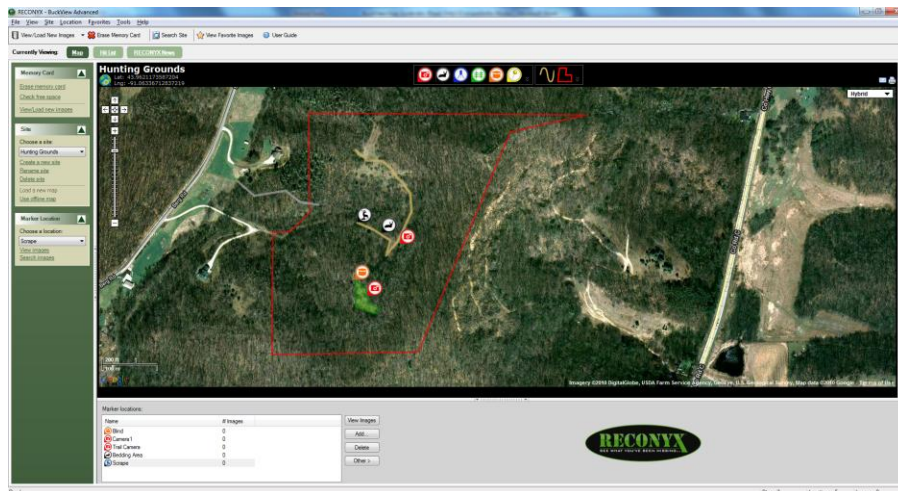




 **BUCKVIEW™ Advanced**
User Guide



Inside This Manual

I. Inside This Manual.....	2
II. Viewing and Managing Your Images.....	3
▪ Manage Image Folders.....	5
▪ Manage Sites.....	6
▪ Manage Locations.....	10
▪ Erase Memory Card.....	14
▪ Check Free Space.....	15
▪ Load New Images.....	15
▪ View Images.....	19
▪ Favorites.....	24
▪ Search Images.....	25
▪ Tag Images and Manage Image Data.....	29
▪ Create Video.....	31
▪ Hit List.....	32
▪ RECONYX News.....	32
III. Warranty and Safety Information.....	33
▪ Satisfaction Guarantee.....	33
▪ Limited Warranty.....	33
IV. Troubleshooting and Technical Support.....	34
▪ Troubleshooting Your BuckView Software.....	34
V. Copyright and Trademark Information.....	36

Disclaimer


While every effort has been made to ensure that the information contained in this “User Guide” is accurate and complete, no liability can be accepted for any errors or omissions.

RECONYX reserves the right to change the specifications of the software described herein at any time without prior notice.

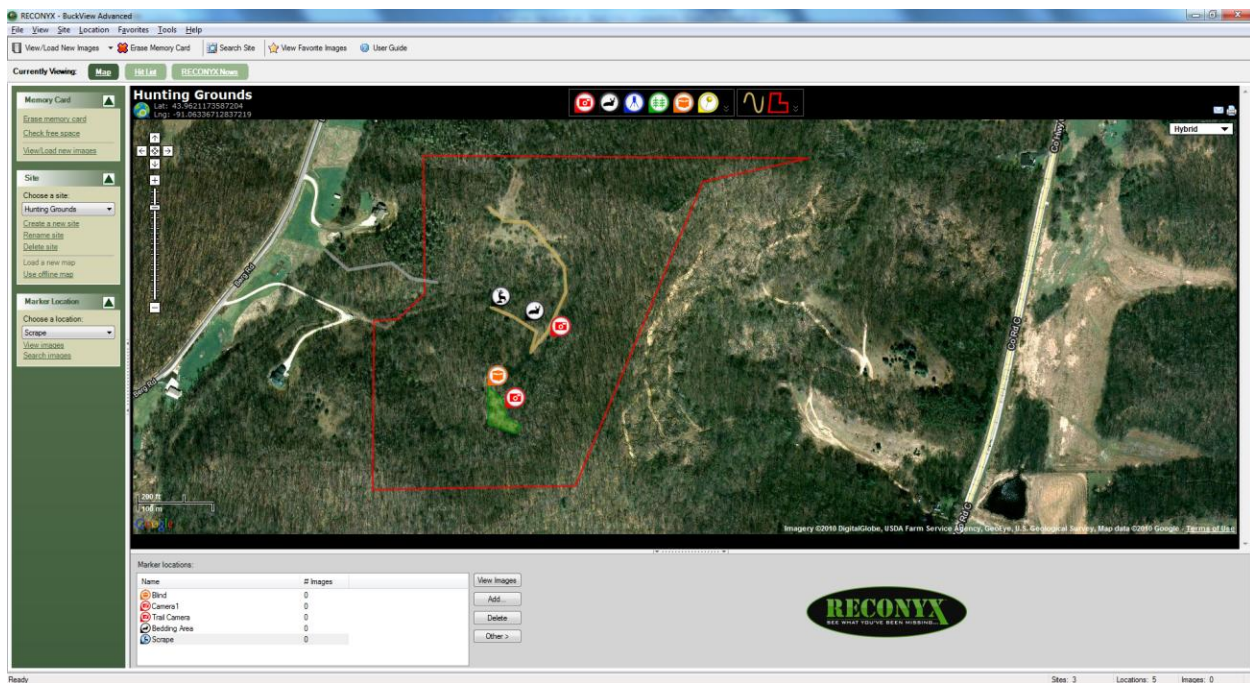
RECONYX makes no warranties for damages resulting from corrupted or lost data due to a mistake in operation or malfunction of the camera, the software, the memory cards, personal computers, or peripheral devices

Viewing and Managing Your Images

BuckView™ Advanced is a complete image-handling system for pictures you take with your RapidFire™ or HyperFire™ Digital Infrared Game Cameras from RECONYX; it can also handle images taken with many other cameras. You can map your camera locations and land markers, organize images (by site and location), view, and search any or all of your images. You can also erase your memory card (see [Erase Memory Card](#)).

To view and manage your images, move your mouse cursor over the RECONYX BuckView icon  on your desktop and double-click your left mouse button. Or from the Microsoft Windows **Start** menu, select **All Programs > RECONYX > BuckView**.


BuckView opens.




BuckView has 3 primary views:

1. [Map](#) is your main workspace for managing your land, cameras and images.
2. Hit List gives a quick view of your favorite bucks.
3. RECONYX News keeps you up-to-date with the latest announcements from RECONYX.



The BuckView Map workspace is divided into three sections, one of which (the left) is hidden by default. The left section includes **Memory Card**, **Site**, and **Marker Location** *Task Pane* menus. The top middle section displays the *site map*. The bottom section shows *marker locations* for the current site. Standard drop-down menus appear across the top, along with toolbar buttons to quickly perform common tasks like viewing/loading new images, erasing your memory card, finding images, viewing favorite images, and displaying this user guide., placing markers on site maps, loading a new map, and viewing images at the current location.

- The left and bottom sections of BuckView can be hidden or displayed (hiding sections provides more room to view site maps; see [Manage Sites](#)). To hide a section, click the section hide button in the middle of the dividing line between sections.  To display a section, click the section display button


 in the middle of the line along the edge of BuckView. You can also display and hide the right section of the “Load New Images Wizard” (see Load New Images), and the left sections of “Location Viewer” (see View Images) and “Site/Location Search” (see Search Images).

Note: When a section is hidden, the *section display* button replaces the *section hide* button, and vice versa. Buttons shown in the preceding examples are for the *bottom* section. The *left* section (*Task Pane*) is hidden and displayed using a similar, vertical button in the middle of the dividing line between sections (the vertical button is bounded by arrows pointing left or right, depending on whether the section can be hidden or displayed, respectively).

Tip: The Task Pane can also be hidden by un-checking **Task Pane** on the **View** drop-down menu; the Task Pane can be displayed by checking **Task Pane** on the **View** drop-down menu.

- Task Pane menus can be expanded or contracted. To contract a menu, click the *contract* button  to the right of the menu name. To expand a menu, click the *expand* button. 

Note: When a Task Pane menu is contracted, the *expand* button replaces the *contract* button, and vice versa.

- The size of the left and bottom sections of BuckView can be adjusted. Move your mouse cursor over the dividing line between the sections,  and when you see the cursor change to a double-headed arrow, click and hold your left mouse button. Then move the dividing line and release your mouse button when the sections are the sizes you want them. You can also adjust sizes of the right section of the “Load New Images Wizard” (see Load New Images), and the left sections of “Location Viewer” (see View Images) and “Site/Location Search” (see Search Images).

Select the task that you want to perform:

Manage Image Folders – Change the location where imported images are stored. This can be done by selecting “Tools” from the top menu and then “Image Folder Settings”.

Manage Sites – Select a *site* (property or area where you set up your camera in one or more *locations*) to work with, rename and delete sites, search images in a site, add a site map, place or remove camera markers, and add new sites.

Manage Locations – Select a *location* (specific spot within a *site* where you set up your camera) to work with, rename and delete locations, view images stored in a location, load new images into a location, create new locations, and place or remove camera markers representing locations on a site map.

Erase Memory Card – Format new memory cards to prepare them for use, and erase used cards to quickly delete old images.

Check Free Space – Check your memory card for free space.

Load New Images – Load (copy) any or all images from your memory card to your computer. You can also load images from one folder on your computer into any of your sites and locations. An *image viewer* for previewing images before you load them is included in the “Load New Images Wizard.”

View Images – View images that you’ve loaded onto your computer. You can also copy images to your “favorites,” save images to another folder, move or copy images from one location to another, and delete images using the “Viewer.”

Favorites – Add your “favorite” images to a folder for easy reference across sites and locations.

Search Images – Search *Image Data* of all images in a *site* (including all locations in the site), or search the Image Data of all images in a *location*.

Tag Images and Manage Image Data – Setup a Hit List of your favorite bucks. Tag images that have captured a photo of your Hit List bucks. Count bucks, does or other animals captured in your photos. Add or edit *narrative* Image Data, and view all Image Data stored with an image.

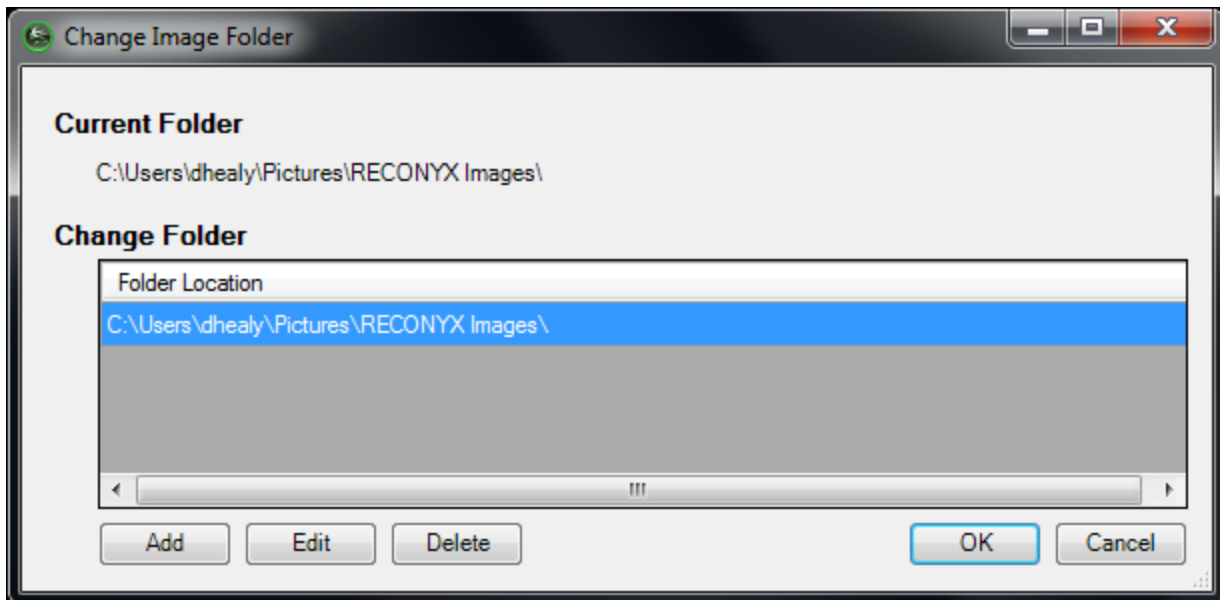
Create Video – Use any of the images you’ve stored in a location to create a video clip.

Manage Image Folders

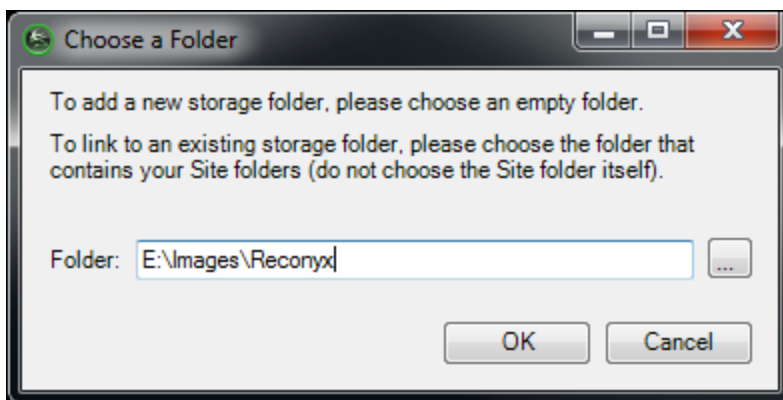
By default, BuckView stores all imported images into the folder “RECONYX Images” inside of your “My Pictures” folder. Inside that RECONYX folder, each site you’ve created has its own folder with sub-folders for each camera location within that site. The images are stored in these camera location folders.

BuckView gives you the option of changing the location of that highest level folder so you can store your images anywhere you choose, including on a shared network drive. This can be done by selecting “Tools” from the top menu and then “Image Folder Settings”.

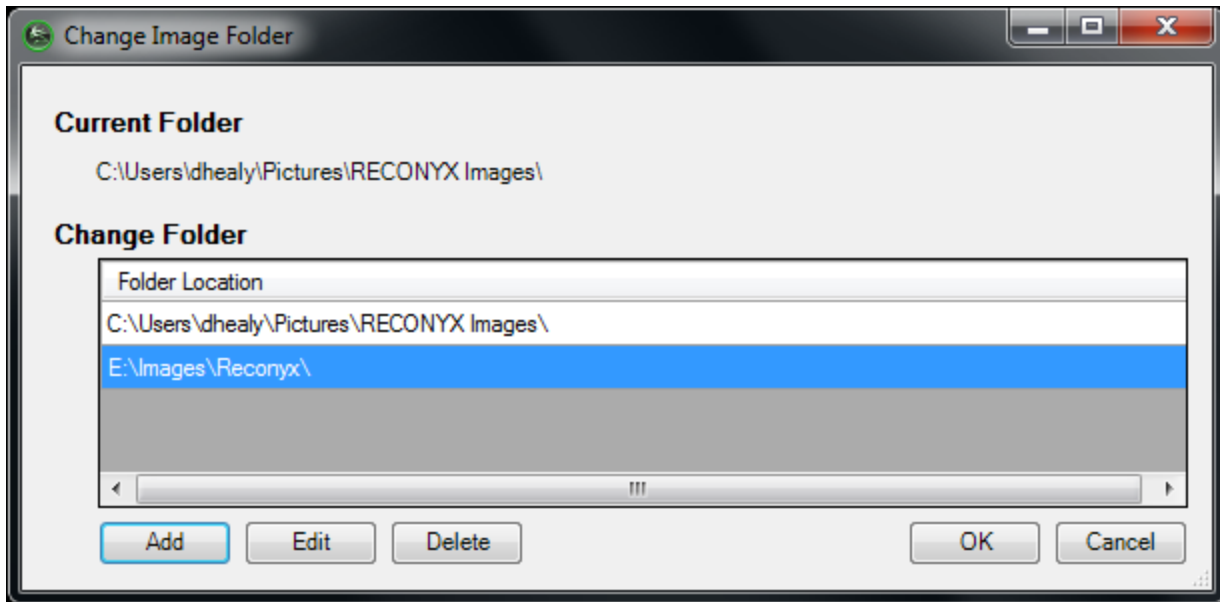
On the new window that pops up, click “Add.”



You can type in the new folder location, or press the “...” button on the right to select a folder. Then click “Save.”



The new folder will appear in the list. To change the Current Folder, select one in the list and click “OK.” The folder list is saved, making it easy to change between folders in the future.

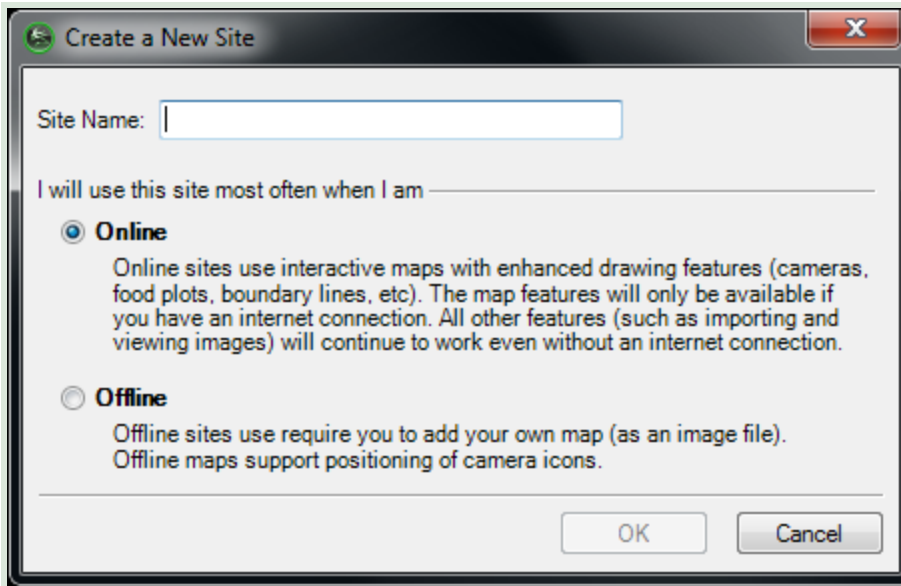


Images are not modified or removed when you change image folders. If you change folders, your sites, maps, camera markers, and images will not be available within BuckView – that is, until you switch back to the original folder location. If you change back to the original folder, everything will be there as you saw it before.

Manage Sites

Use the **Site** drop-down menu at the top of BuckView to select the current site, rename a site, delete a site, find images for a site, load a site map, place a marker, and create a new site. You can also use the **Site** Task Pane menu in the left (hidden by default) section of BuckView to perform many of these tasks (these and other alternate instructions, where available, are also included in this user guide).

1. To create a new site, from the Site drop-down menu, select **Add Site**. Or, in the **Site** Task Pane menu, click **Create a new site**.



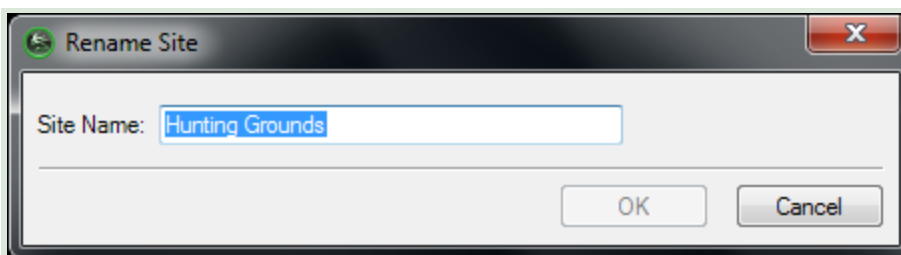
Enter the **Name** of your new site.

If you have an internet connection and want to make the most of your BuckView mapping tools, choose Online site. If you do not have internet access or wish to manage your maps while you are “in the field” then choose Offline site.

Note: A Site may have both an Online and Offline map. Your location folders and all images are accessible and shared by both the Online and Offline maps. What are not shared are the drawing tools (camera markers and other icons, trails maps, property boundaries, etc.) For more details see Mapping Tools.

Click **OK** to create your new site and close “Create a New Site.” Click **Cancel** to close “Create a New Site” without creating a new site.

2. To select an existing site to work with (the *current site*), from the **Site** drop-down menu, select **Current Site**, and then choose the site you want to work with from the list that appears. Or, in the **Site** Task Pane menu, **Choose a site** from the drop-down list.
3. To rename the current site, from the **Site** drop-down menu, select **Rename Current**. Or, in the **Site** Task Pane menu, click **Rename site**.



Enter the new **Name** for your site.

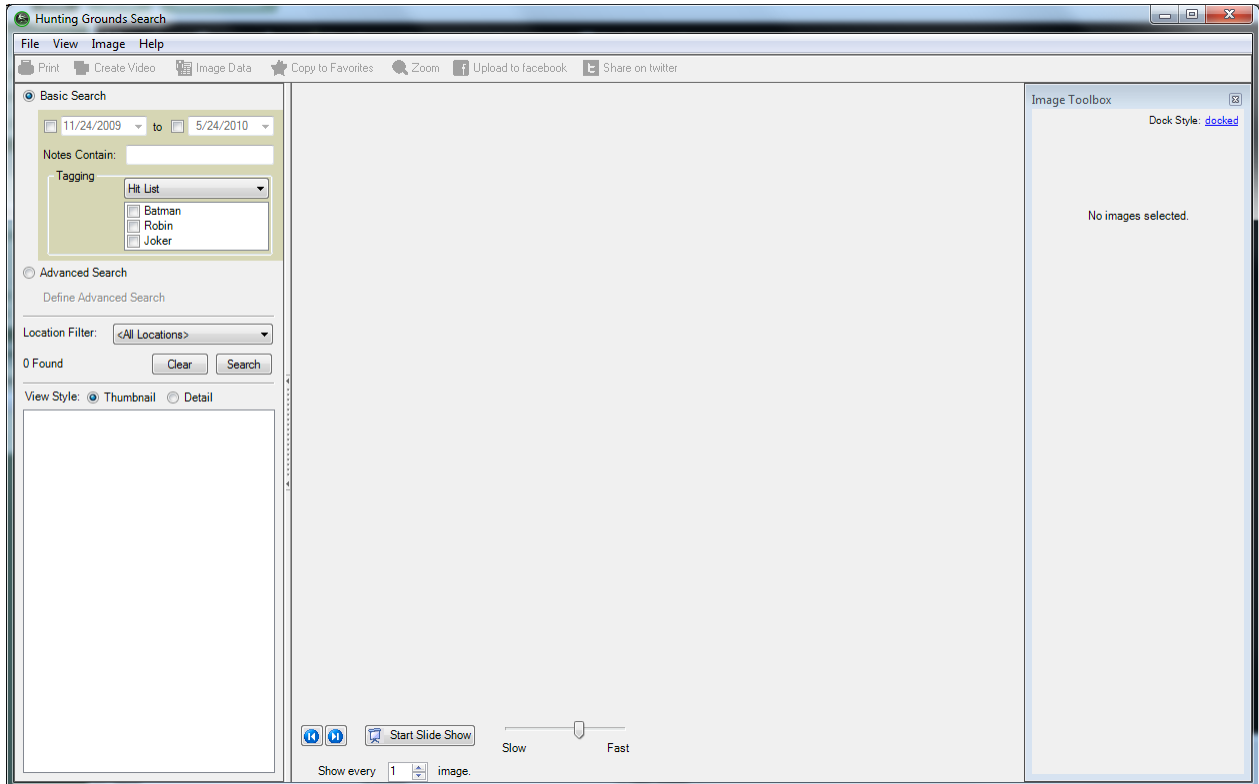
Click **OK** to change the name of your site and close “Rename Site.” Click **Cancel** to close “Rename Site” without changing the name of your site.

4. To delete the current site, from the **Site** drop-down menu, select **Delete Current**. Or, in the **Site** Task Pane menu, click **Delete site**.

Important! When you delete a site, *all images in all camera locations for that site* are deleted. You will be asked to confirm that you want to delete the current site. Click **Yes** to delete the site. Click **No** to keep the site and cancel the deletion process.

Note: You must have at least one site in BuckView (if you have only one site, you cannot delete that site).

5. To search the images in the current site, from the **Site** drop-down menu, select **Find Images**. Or, click the **Find Images** toolbar button.



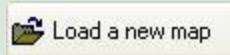
“*Site Search*” opens (where *Site* is the name of your current site). Searches that you perform in this search window will search all images in the current site. See [Search Images](#) for detailed instructions on searching your images.

6. To add a site map to the current site for display in the top right section of BuckView, follow the steps below for Offline or Online sites.

For **Offline** sites:

From the **Site** drop-down menu, select **Load Map**. Or, in the **Site** Task Pane menu, click **Load a new map**.

Tip: You can also click the **Load a new map** toolbar button.



Important! When you load a map, *all camera markers for that site* will be deleted, although *no images* will be lost. You will be asked to confirm that you want to load a new map for the current site. Click **Continue** to load a new map, and proceed to browse to the map or aerial photograph you want to display for the current site. Click **Cancel** to keep the current map and cancel the deletion process.


Tip: When you're asked to confirm that you want to load a new map for the current site, you can also access information to help you obtain maps from Microsoft TerraServer website. Click **Help me find a map of my land** to view instructions for downloading public domain aerial photos and topographical maps from TerraServer.

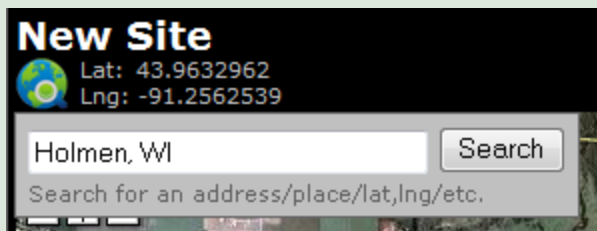
Once you've selected a site map, you can **Place Camera Markers** on the map to represent locations in the site (see [Manage Locations](#)).

For **Online** sites:

Online sites use Google Maps™ mapping service and RECONYX mapping technology to provide you with an interactive camera and image management experience.

Online sites start with a default view of North America. Use the navigation tools on the map to zoom in/out and scroll/pan to locate your land.

Tip: You can click on the Globe icon  in the upper left of the map to open the map search control and Search for a location:



Once you've located your site, you can place a variety of markers on the map to represent locations in the site (see [Manage Locations](#)). You can also use drawing tools to map your land.

Manage Locations

Note: Locations displayed in the **Location** drop-down menu, the **Camera Location** Task Pane menu, and **Camera locations** in the bottom section of BuckView are for the *current site* (see [Manage Sites](#)).

Use the **Location** drop-down menu at the top of BuckView to select the current location, rename a location, delete a location, find images in a location, view images for a location, load new images from your camera's memory card or another directory into a location, and add a new location. You can also use the **Camera Location** Task Pane menu in the left section of BuckView (hidden by default) to perform some of these tasks (these and other alternate instructions, where available, are also included in this user guide).

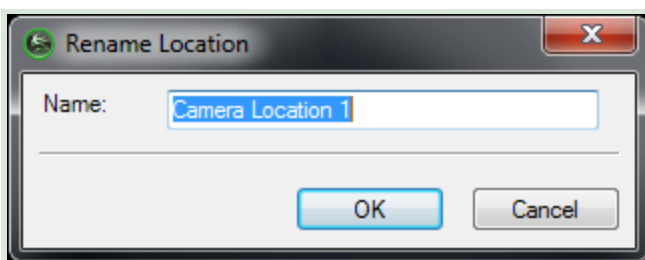
If the current site includes a map (see [Manage Sites](#)), you can place and remove camera markers to represent your camera locations on the map.

1. To select a different location to work with (the *current location*): from the **Location** drop-down menu, select **Current Location** and then choose the location you want to work with from the list that appears. Or, in the **Marker Locations** Task Pane menu, **Choose a location** from the list.

Tip: You can also click the location you want to work with from the **Marker locations** displayed in the bottom section of BuckView to make it the current location. Or, if the location you want to work with is associated with a map marker, you can click the marker of the location that you want to select.

2. To rename the current location, from the **Location** drop-down menu, select **Rename Current**.

Tip: You can also click the **Other** button in the Marker locations (bottom) section of BuckView and from the menu that appears, select **Rename Location**.



Change the **Name** of the location.

Click **OK** to save your changes and close "Rename Location." Click **Cancel** to close "Rename Location" without saving your changes.

3. To delete the current location, from the **Location** drop-down menu, select **Delete Current**.

Tip: You can also click the **Delete** button in the Marker locations (bottom) section of "BuckView."

Important! When you delete a location, *all images in that location* are deleted. You will be asked to confirm that you want to delete the current location. Click **Yes** to delete the location. Click **No** to keep the location and cancel the deletion process.

4. To search the images in the current location, from the **Location** drop-down menu, select **Find Images**. Or, in the **Marker Location** Task Pane menu, click **Search images**.



Tip: You can also click the **Other** button in the bottom right corner of BuckView, and from the menu that appears, select **Search Location**.



"*Location Search*" opens (where *Location* is the name of your current location); this will search all images in the current location. See [Search Images](#) for detailed instructions.

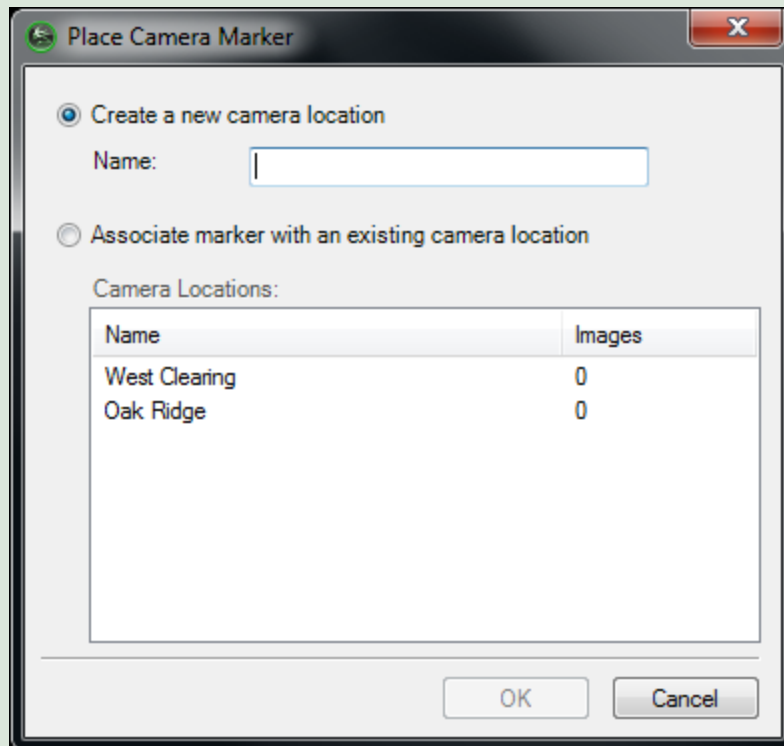
5. To view images for the current location, from the **Location** drop-down menu, select **View Images**. Or, in the **Marker Location** Task Pane menu, click **View Images**. See [View Images](#) for detailed instructions.
6. To place a camera marker:

For **Offline** sites:

From the **Site** drop-down menu, check **Place Camera Marker**. Or, click the site's **Place Camera Marker** toolbar button.

Note: When your mouse cursor looks like a green map pin , “Place Camera Marker” appears any time you click on the site map. Your mouse cursor will automatically switch back to “standard”  after you place your marker, or cancel the marker-placing process.

Tip: Once you place a marker on a map, it appears as a green map pin with a red center.  You can change locations by clicking the marker of the location you want to select. The selected marker has a blue background. 



Select whether you want to **Create a new camera location** (and enter the **Name** of the new location), or **Associate with an existing camera location** (and select the location from the list of **Camera Locations** that are not yet marked on the site map).

Click **OK** to place the camera marker for this location and close “Place Camera Marker.” Click **Cancel** to close “Place Camera Marker” without adding a camera marker.

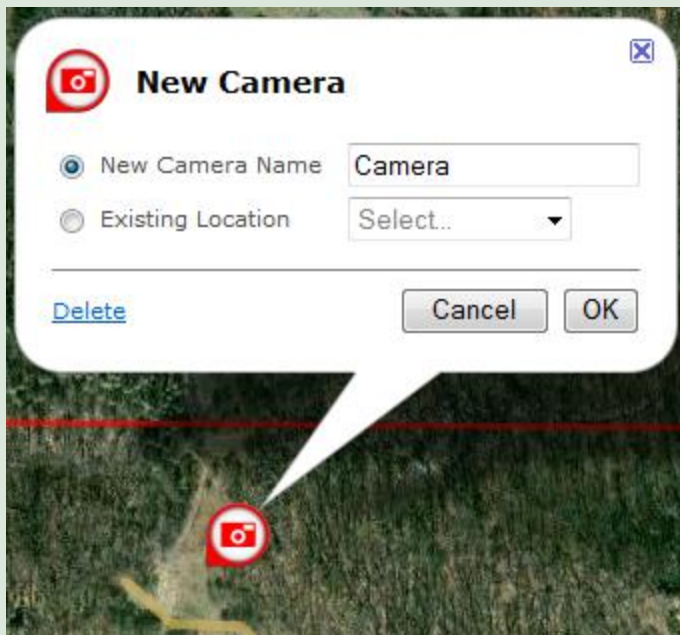
For **Online** sites:

Click on the Marker Type of your choice from the toolbox above the map.

Tip: To see more markers, click on the grey down arrows on the right side of the markers toolbox (noted by the green arrow below). Hold your cursor over any marker to see a description of the marker.



Your cursor will change to match the marker you have selected. Move the marker over the map and click to drop it at your selected position.



Select whether you want to **Create a new camera location** (and enter the **Name** of the new location), or link the marker to an **Existing Location** (and select the location from the list of locations that are not yet marked on the site map).

Tip: Online sites let you choose many types of markers and link images to them. You may choose to store your images under any marker folder or only use camera markers as image storage folders.

Click **OK** to place the camera marker for this location and close “New Camera.” Click **Cancel** to close “New Camera” without adding a camera marker.

7. To load new images into the current location, from the **Location** drop-down menu, select **Load New Images**, and then select where you're loading images from (**From Memory Card** or **From Another Folder**). See [Load New Images](#) for detailed instructions.

Tip: The "Load New Images Wizard" includes an *image viewer*; you will be able to examine your images before deciding which – if any – you want to load on to your computer.

8. To remove the current site's camera marker from the map

For **Offline** sites:

Move your mouse cursor over the marker, click your right mouse button, and from the menu that appears, select **Remove Camera Marker**. Or, click the **Other** button in the in the bottom right corner of BuckView, and from the menu that appears, select **Remove Camera Marker**.

Tip: If you want to move the current location's camera marker from one position on the map to another, you must first remove the existing camera marker for the current site (use **Remove Camera Marker**) and then place a new camera marker and associate it with the site (use **Place Camera Marker**).

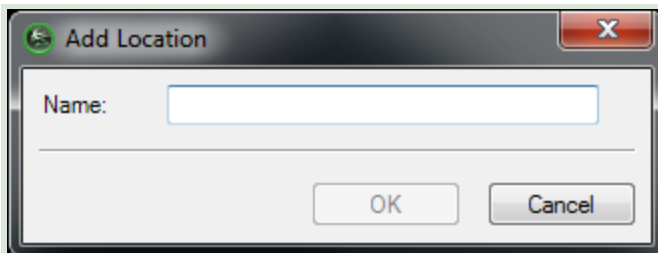
For **Online** sites:

Click on the marker and from the popup window, choose **Delete**. Or, click the **Other** button in the in the bottom right corner of BuckView, and from the menu that appears, select **Remove Camera Marker**.

Tip: If you want to move the current location's marker from one position on the map to another, can just click and drag the marker to the new position.

9. To create a new location, from the **Location** drop-down menu, select **Add Location**.

Tip: You can also click the **Add** button in the bottom right corner of "BuckView."



Enter the **Name** of the location you're adding.

Click **OK** to create your new location and close "Add Location." Click **Cancel** to close "Add Location" without creating a new location.

Erase Memory Card

Your memory card must be formatted FAT or FAT 32 for use with your RapidFire™ or HyperFire™ camera and BuckView™ software. If you are uncertain of the formatting of your memory card, use BuckView to erase the card; erasing the card also properly formats it for use with your camera.

Note: You must have permissions set on your computer to allow you to format removable media. If you can not format memory cards using BuckView, check with computer technical support personnel to be sure you have permissions set properly. [Troubleshooting and Technical Support](#) also includes instructions for how to set up formatting privileges.

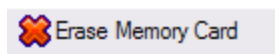
Tip: If you are using a laptop computer, consider a PCMCIA adapter card for accessing memory cards as they are more convenient than USB card readers.

Erasing a used card after you've loaded the images you want to save onto your computer is a much quicker method of clearing the card than deleting the images. Options for erasing your memory card are available in the "Load New Images Wizard" (see [Load New Images](#)).

To erase your memory card:

1. Insert the card in your computer's memory card reader and from the **Tools** drop-down menu, select **Memory Card**, and then select **Erase (Format)**. Or, in the **Memory Card** Task Pane menu, click **Erase Memory card**.

Tip: You can also click the **Erase Memory card** toolbar button.



Note: Erasing a Memory card will delete *all images and other information* on the card. You will be asked to confirm that you want to erase the card. Click **Yes** to erase the card. Click **No** to cancel the process.

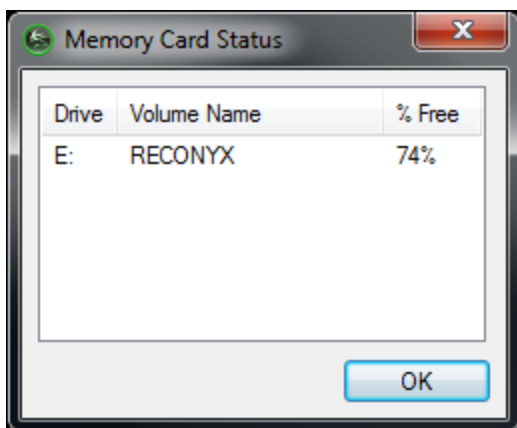
2. Erasing is completed automatically.

Check Free Space

You can check your memory card for free and used space.

To check the free space available on your memory card:

1. Insert the card into your computer's memory card reader and from the **Tools** drop-down menu, select **Memory Card**, and then select **Check Free Space**. Or, in the **Memory Card** Task Pane menu (hidden by default), click **Check free space**.
2. "Memory Card Status" opens.



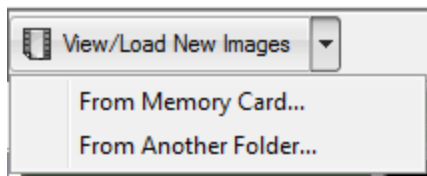
The memory card is displayed as a lettered drive with available free space displayed as a percent.

Load New Images

The process of loading new images is automated by the "Load New Images Wizard." The way that you start the "Load New Images Wizard" depends on if you know where you want to load the images, or if you want to choose the site and location where you want to load the images *after* you select the specific images you want to load.

Note: The "Load New Images Wizard" includes an *image viewer*; you will be able to examine your images before deciding which – if any – you want to load on to your computer.

- If you want to load new images into the current site and location, click the arrow at the right of the **View/Load New Images** toolbar button (located above the Task Pane menus) and from the menu that appears, select the location you're loading images from: **From Memory Card** or **From Another Folder**.



Tip: If you're loading images from your memory card *and* you want to load new images to the current site and location, you can also click the **View/Load New Images** toolbar button itself (not the arrow). Or, from the **Tools** drop-down menu, select **Memory Card**, and then select **Load New Images**.

- If you want to load new images into *a different location within the current site*, select the location you want in **Marker locations** (in the bottom section of BuckView) and then click the **Other** button in the bottom right corner of BuckView. Then, from the menu that appears, select **Load New Images**, and then select **From Memory Card** or **From Another Folder**.

Note: You can also move your mouse cursor over the location in **Marker locations** and click your right mouse button. From the menu that appears, select **Load New Images**, and then select **From Memory Card** or **From Another Folder**.

- If you want to decide the site and location you want to load new images into *after you select the specific images you're going to load*, from the **Location** drop-down menu, select **Load New Images**, and then select the location you're loading images from: **From Memory Card** or **From Another Folder**.

Note: If you're loading images from your memory card *and* you want to decide the site and location you want to load images into *after you select the images you're going to load*, in the **Memory Card** Task Pane menu, select **View/Load new images**.

On screens within the wizard:

- Click **Erase Memory Card** to remove all images from the card (see [Erase Memory Card](#)).
- Note:** This button is not available when you're loading new images from another folder.
- Click **Back** to return to the previous screen in the wizard.
 - Click **Next** to advance to the next screen in the wizard.
 - Click **Cancel** to close the wizard without loading any images.
 - Click **Finish** to close the wizard after image loading is complete.

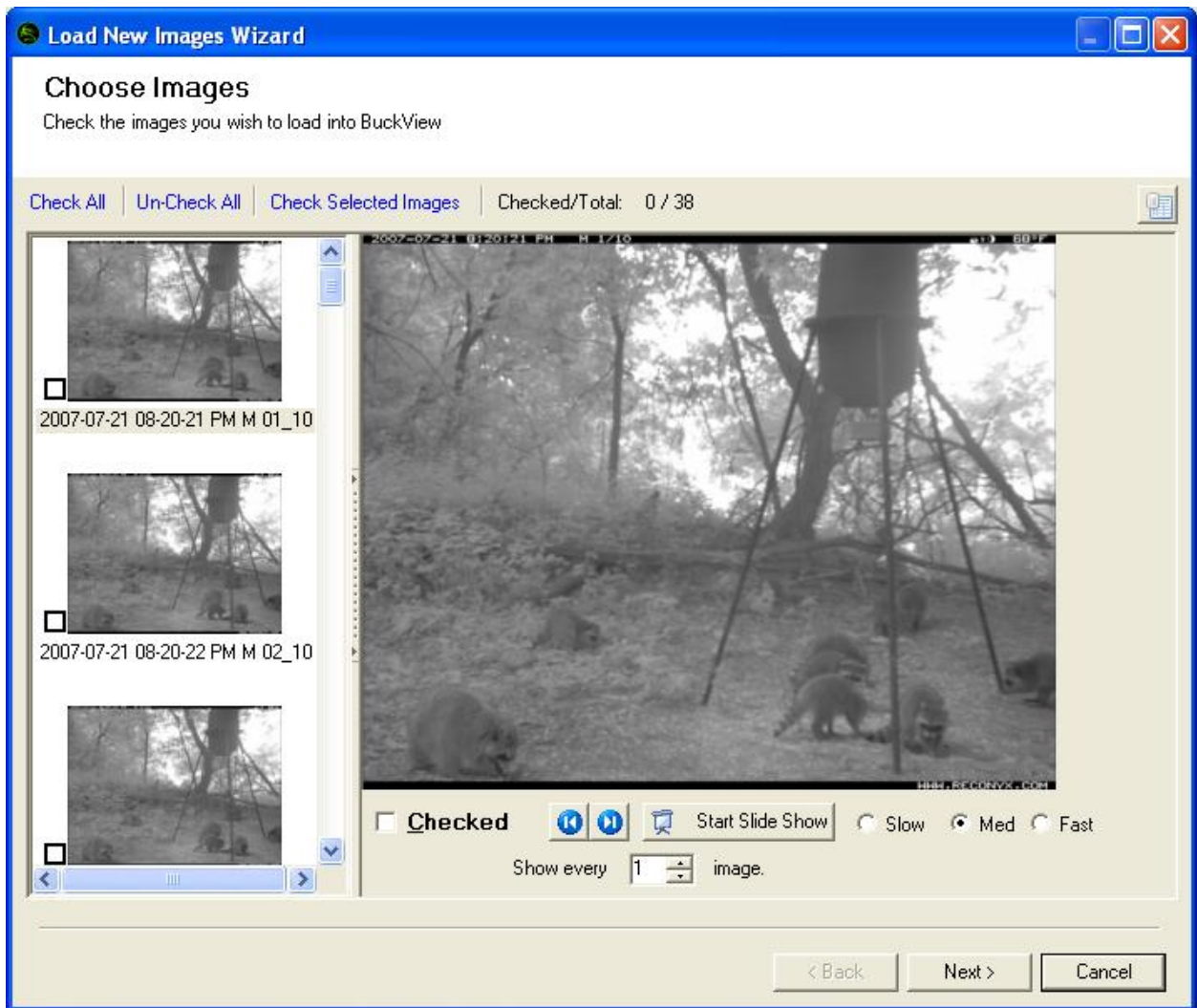
1. *If you're loading new images from a memory card*, the "Load New Images Wizard" displays the "Choose Source Folder(s)" screen.

Select the folder or folders on your memory card that you want to load images from. As you make your selection(s), a preview of the first image in the selected folder appears at the right. Click **Next** to continue.

- To select an individual folder for loading, click the checkbox to the left of the folder's name (so that a checkmark appears in the box). To un-select a folder, click the checkbox to the left of the folder's name (so that no checkmark appears in the box).
- To quickly check all folders for loading, click **Check All**.
- To quickly un-check all folders (so that no folders are selected for loading), click **Un-Check All**.

If you're loading new images from another folder on your computer, the "Load New Images Wizard" displays "Browse for Folder." Select the folder you're loading images from and click **OK**.

2. The "Load New Images Wizard" displays the "Choose Images" screen. Images within the available source folder(s) are displayed.



Select the image or images that you want to load. As you make your selection(s), the **Checked/Total** in the center of the screen above the *image viewer* updates the number of images you've checked, and also displays the total number of images available for loading. Click **Next** to continue.



The image viewer is divided into two sections: thumbnail images on the left, and an enlarged view of the current thumbnail on the right. The right section can be hidden or displayed.

Note: You can adjust the size of the *right* section of the image viewer, and hide or display this section as well (see [Viewing and Managing Your Images](#)).

At any time when the image viewer is open (with the enlarged image section displayed *or* hidden):

- To select an individual image for loading, click the checkbox to the left of the image (so that a checkmark appears in the box). To un-select an image, click the checkbox to the left of the image (so that no checkmark appears in the box).
- To mark all images in a sequence, click the first *image* you want to load (not the image's checkbox). Press and hold the **Shift** key on your keyboard, click the last *image* in the sequence you want to select, and then release the **Shift** key. All of the image names from the first image you clicked to the last image you clicked are highlighted. Click the *checkbox* of any highlighted image to select all of the highlighted images for loading (or click **Check Selected Images**). You can un-check a sequence of selected images in the same way.
- To quickly select all images for loading, click **Check All**.
- To quickly un-select all images (so that no images are marked for loading), click **Un-Check All**.

When the image viewer's enlarged image section is *displayed*:

- To select the current image for loading, check the **Checked** checkbox under the enlarged image. To un-select the current image for loading, un-check the **Checked** checkbox under the enlarged image.
- To view the previous image, click the **Previous Image** button. 
- To view the next image, click the **Next Image** button. 
- To view the images in a slideshow (automatically advancing display), click the **Start Slide Show** button.




You can adjust the speed of the display by clicking **Slow**, **Med**(ium), or **Fast**, as desired. Click **Stop Slide Show** at any time after the slideshow begins to stop it.

Tip: Clicking the displayed image will also stop the slideshow.

Note: When the slideshow is playing, the **Stop Slide Show** button replaces the **Start Slide Show** button, and vice versa.

You can also change the *interval of images* in the slideshow. Every image is shown by default (**Show every 1 image.**); increasing this value will display fewer images in the slideshow, allowing you to view the sequence more quickly.

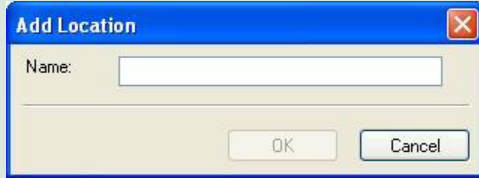
- To view image data for the current image, click *view image data* button (above the upper right corner of the enlarged image). 

Note: You can view image data when you're using the image viewer in the "Load New Images Wizard," but you cannot edit it. See [Tag Images and Manage Image Data](#) to add, edit, or delete image data.

3. If you started the "Load New Images Wizard" using the **View/Load New Images** toolbar button or the **Tools** drop-down menu option for loading images, the "Load New Images Wizard" displays the "Choose Camera Location" screen.

Select the **Site** and **Location** where you want to load the images you selected. If you want to load the images you selected into a new location, select the **Site** where you want the new location and click **Add a new location**.

“Add Location” opens.



Enter the **Name** of the location you’re adding.

Click **OK** to create your new location and close “Add Location.” Click **Cancel** to close “Add Location” without creating a new location.

Click **Next** to continue.

If you started the “Load New Images Wizard” using another method, skip to step 4.

4. The “Load New Images Wizard” displays the “Summary” screen. The total number of images you’ve selected to load and the folders from *and* to which you’re loading those images are displayed for your review. Click **Next** to continue.

Tip: If you’re loading new images from a memory card and want to erase the card after the images you selected are loaded onto your computer, check **Erase card after saving images**. This option is not available if you’re loading new images from another folder.

5. The “Load New Images Wizard” displays the “Copying Images” screen. The progress of copying the images you selected is displayed and you will be notified when the process is complete. Click **Finish** to exit the wizard.

Note: Errors, if any, are listed after the process is complete. See [Troubleshooting and Technical Support](#).

View Images

You can view images that you haven’t loaded from your memory card onto your computer using the *image viewer* that’s included in the “Load New Images Wizard” (see [Load New Images](#)). You can also view images that you’ve already loaded onto your computer. The “Viewer” behaves similarly to the image viewer that’s included in the “Load New Images Wizard,” but includes many additional features, such as the ability to print images and create videos from images, search images, zoom in and out on images, and copy images as favorites (see [Favorites](#)).

Note: When you view images, images are displayed from the current site and location. *Before beginning the viewing process*, select the site (see [Manage Sites](#)) and location (see [Manage Locations](#)) you want to view images for.

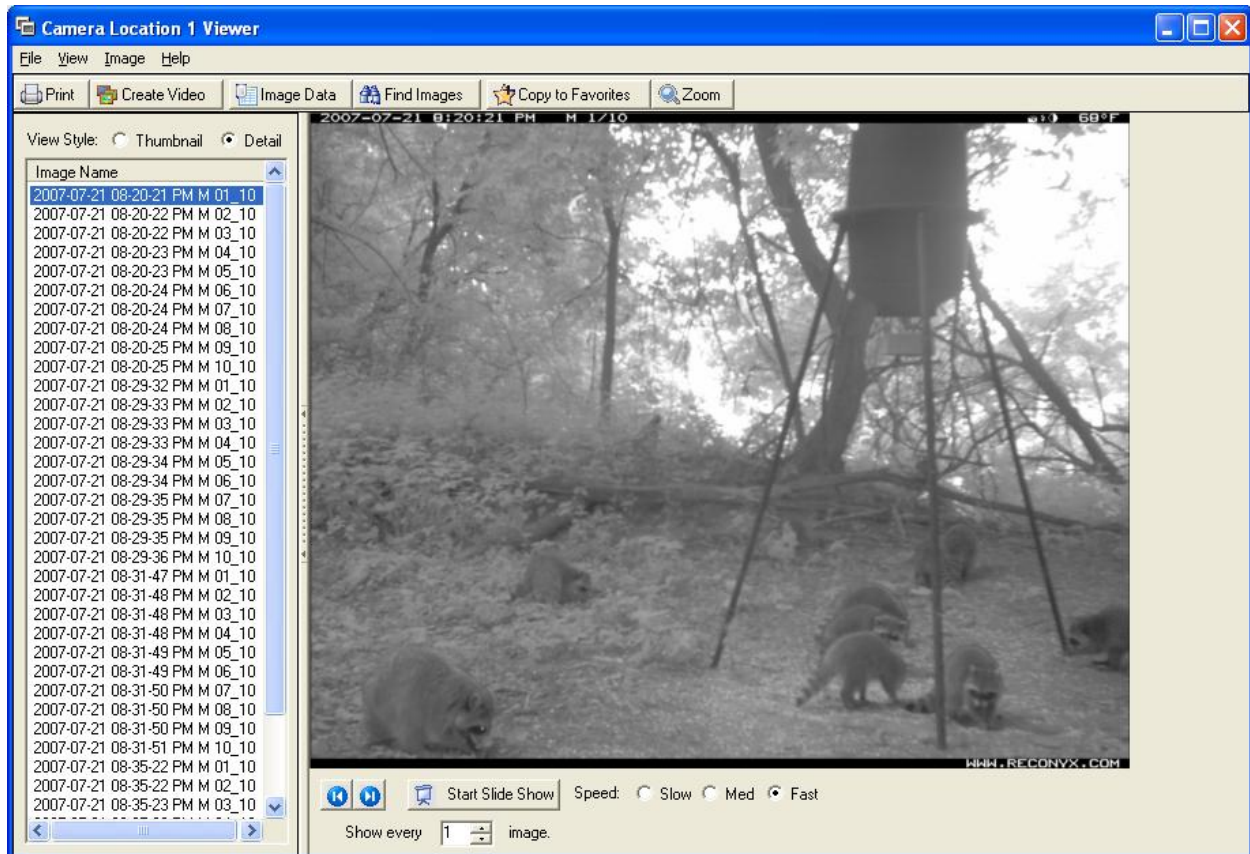
To open the “Viewer:”

- To view images in the current site and location, from the **Location** drop-down menu, select **View Images**. Or, in the **Camera Location** Task Pane menu, click **View images**. Or, in the **Location** toolbar, click the **View Images at Location** button (where *Location* is the name of the current location).



Tip: You can also view images from any **Camera location** by moving your mouse cursor over that location in the list at the bottom of BuckView and double-clicking your left mouse button, or by selecting the **Camera location** and clicking the **Other** button (select **View Images** from the menu that appears). And, if the location is marked on the site map, you can move your “standard” mouse cursor over the camera marker, click your right mouse button, and from the menu that appears, select **View Images**.

The viewer window opens.



The title of the viewer is “*Location Viewer*” (where *Location* is the name of the current location), and images in this viewer are for this location only.

The viewer is divided into two sections: available images (*thumbnail* or *detail* view styles) on the left, and an enlarged view of the current list on the right. The left section can be hidden or displayed (hiding this section displays the enlarged image only).

Images can be listed in *thumbnail view* (by image name, with a reduced-size version of the image also displayed) or *detail view* (by image name):

- To list your images in detail view, select **Detail** for the **View Style** at the top of the left section of the viewer, or from the **View** drop-down viewer menu, select **Detail**.
- To list your images in thumbnail view, select **Thumbnail** for the **View Style**, or from the **View** drop-down menu, select **Thumbnail**.

Note: You can adjust the size of the *left* section of the viewer, and hide or display this section as well (see [Viewing and Managing Your Images](#)).

To move through the images in this location, use the navigation buttons underneath the enlarged image display.

1. To view any image in the right section of the viewer in enlarged view, click the image you want in the list. This image is the *current image*.

2. To display the image *before* the current image, click the **Previous Image** button. 

Tip: You can also use the *left arrow* key on your keyboard to switch to the previous image.

3. To display the image *after* the current image, click the **Next Image** button. 

Tip: You can also use the *right arrow* key on your keyboard to switch to the next image.

4. To view the images in a slideshow (automatically advancing display), click the **Start Slide Show** button.



You can adjust the speed of the automatic display by clicking **Slow**, **Med(ium)**, or **Fast**, as desired. Click **Stop Slide Show** at any time after the slideshow begins to stop it.

Tip: Clicking the displayed image will also stop the slideshow.

Note: When the slideshow is playing, the **Stop Slide Show** button replaces the **Start Slide Show** button, and vice versa.

You can also change the *interval of images* in the slideshow. Every image is shown by default (**Show every 1 image.**); increasing this value will display fewer images in the slideshow, allowing you to view the sequence more quickly.

5. To print the current image, from the **File** drop-down menu, select **Print**.

Tip: You can also click the **Print** toolbar button.



6. To create a video from a series of images, select the images you want to include in the video and from the **File** drop-down menu, select **Create Video**. See [Create Video](#) for more information.

Tip: You can also click the **Create Video** toolbar button.

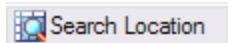


7. To view, add to, or edit the current image's **Image Data**, from the **Image** drop-down menu, select **Image Data**. "Add/Edit Image Data" opens. See [Tag Images and Manage Image Data](#) for more information.

Tip: You can also click the **Image Data** toolbar button.



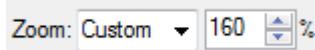
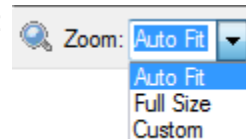
8. To search the images, click the **Search Location** toolbar button.



"*Location Search*" opens (where *Location* is the name of the current location). Searches that you perform in this search window will search all images in the current location. See [Search Images](#) for more information.

9. To zoom in on the current image, you can choose from 3 options :

1. **Auto Fit:** this will automatically size the image for best fit within the viewing area.
2. **Full Size:** this will show the image in its full original size. The image will likely be larger than the viewing area so you may need to scroll up/down or left/right to see portions of the image.
3. **Custom:** this will allow you to zoom the image in or out from 25% to 500% of the original image size. You can adjust the zoom level by setting the zoom percentage in the number field that is shown next to the Zoom type:



You can also use your mouse

wheel to zoom in and zoom out. As you move to the next image, the zoom level is maintained.

The “Viewer” also includes options for copying images to your favorites, saving images to another folder on your computer, exporting image data, moving or copying images to another *location*, and deleting images. All of these tasks can be performed on an individual image (the current image) or on multiple images.

- To select multiple images that are all *adjacent to one another in the list of available images*, move your mouse cursor over the *first* image you want to select and click your left mouse button. Then, press and hold the **Shift** key on your keyboard. While holding the **Shift** key, move your mouse cursor over the *last* image you want to select and click your left mouse button. All images listed *between* the first image you clicked and the last image you clicked are selected.
- To select multiple images that are *not adjacent to one another in the list of available images*, move your mouse cursor over *any one* of the images you want to select and click your left mouse button. Then, press and hold the **Ctrl** key on your keyboard. While holding the **Ctrl** key, move your mouse cursor over another image that you want to select and click your left mouse button, repeating until all the images you want are selected.

1. To copy the selected image(s) to your favorites, from the **File** drop-down menu, select **Copy Image(s) to Favorites**. The image is copied into your **Favorites** folder.

Tip: You can also click the **Copy to Favorites** toolbar button.



Note: To view your favorite images, see [Favorites](#).

2. To save the selected image(s) into another folder on your computer, from the **File** drop-down menu, select **Save Image(s) to** and browse to the folder you want to save the image(s) in.
3. To remove the selected image(s) from this *location* and put it in another location, from the **Image** drop-down menu, select **Move to Another Camera Location**.

“Move to location” opens.

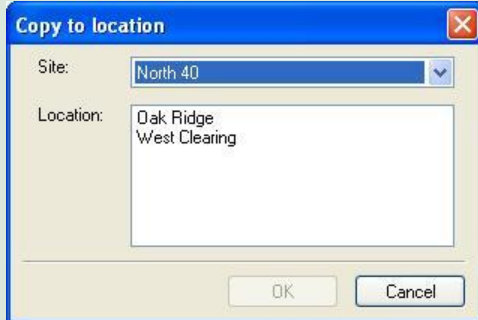


Select the **Site** and **Location** where you want to move the selected image(s).

Click **OK** to move the image(s) and close “Move to location.” Click **Cancel** to close “Move to location” without moving the image(s).

4. To copy the selected image(s) and put the copy(ies) in another *location*, from the **Image** drop-down menu, select **Copy to Another Location**.

“Copy to location” opens.



Select the **Site** and **Location** where you want to copy the selected image(s).

Click **OK** to copy the image(s) and close “Copy to location.” Click **Cancel** to close “Copy to location” without copying the image(s).

5. To delete the selected image(s), from the **Image** drop-down menu, select **Delete**. You will be asked to confirm that you want to delete the image. Click **Yes** to delete the image(s). Click **No** to keep the image(s) and cancel the deletion process.

Tip: Several of the menu options in the **File** and **Image** drop-down menus in the “Viewer” are also available when you move your mouse cursor over a thumbnail or detail image name in the list of images on the left side of the viewer window and click your right mouse button: **Image Data**, **Print**, **Create Video**, **Copy Image(s) to Favorites**, **Save Image(s) To**, and **Delete**.

A “MultiViewer” is also available to display two, three, or four images at the same time.

- To select two, three, or four images that are all *adjacent to one another in the list of available images*, move your mouse cursor over the *first* image you want to select and click your left mouse button. Then, press and hold the **Shift** key on your keyboard. While holding the **Shift** key, move your mouse cursor over the *last* image you want to select and click your left mouse button.
- To select two, three, or four images that are *not adjacent to one another in the list of available images*, move your mouse cursor over *any one* of the images you want to select and click your left mouse button. Then, press and hold the **Ctrl** key on your keyboard. While holding the **Ctrl** key, move your mouse cursor over another image that you want to select and click your left mouse button, repeating until all the images you want to view are selected.
- From the **View** drop-down menu, select **Side By Side**. The “MultiViewer” opens with the selected images displayed.

Note: You can have multiple MultiViewers open at the same time.



Favorites

You can add your “favorite” images (images that you want be able to reference quickly, across locations and even across sites) so that you can open the “My Favorite RECONYX Images Viewer” and view all your favorite images together. You can also access the folder that contains your favorites and use Microsoft Windows options to order prints online and copy images to a CD.

Note: You can add images to your Favorites folder from any “Viewer” that you’re looking at the images in (see [View Images](#)).

1. To view your favorites, from the **Favorites** drop-down menu, select **View Favorite Images**. Or, click the **View Favorite Images** toolbar button.



The “My Favorite RECONYX Images Viewer” opens. This viewer operates the same as any other, but instead of displaying images by site or location, it displays only your favorites.

2. To open your Favorites folder, from the **Favorites** drop-down menu, select **Open Favorites Folder**. The **My Favorite RECONYX Images** folder opens, including a **Pictures Tasks** task panel menu on the left side. Select the images you want to work with and the tasks you want to perform.

Note: Certain tasks do not appear in the list of task panel menus until you select one or more images. For example, **E-mail this file** (or **E-mail the selected items** if you've selected multiple images) does not appear in **File and Folder Tasks** until you select an image or images.

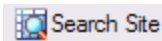
Search Images

You can search **Image Data** of all images in a *site* (including all locations in the site), or search the Image Data of all images in a *location*. The "Search" is the same in both cases.

Note: When you search images, images in your search results are displayed from the current site or current location. *Before beginning the search process*, select the site (see [Manage Sites](#)) or location (see [Manage Locations](#)) you want to search.

The way that you start the "Search" from within BuckView depends on whether you want to search an entire *site* or a specific *location* within a site.

- To search all images in the current site, click the **Search Site** toolbar button.

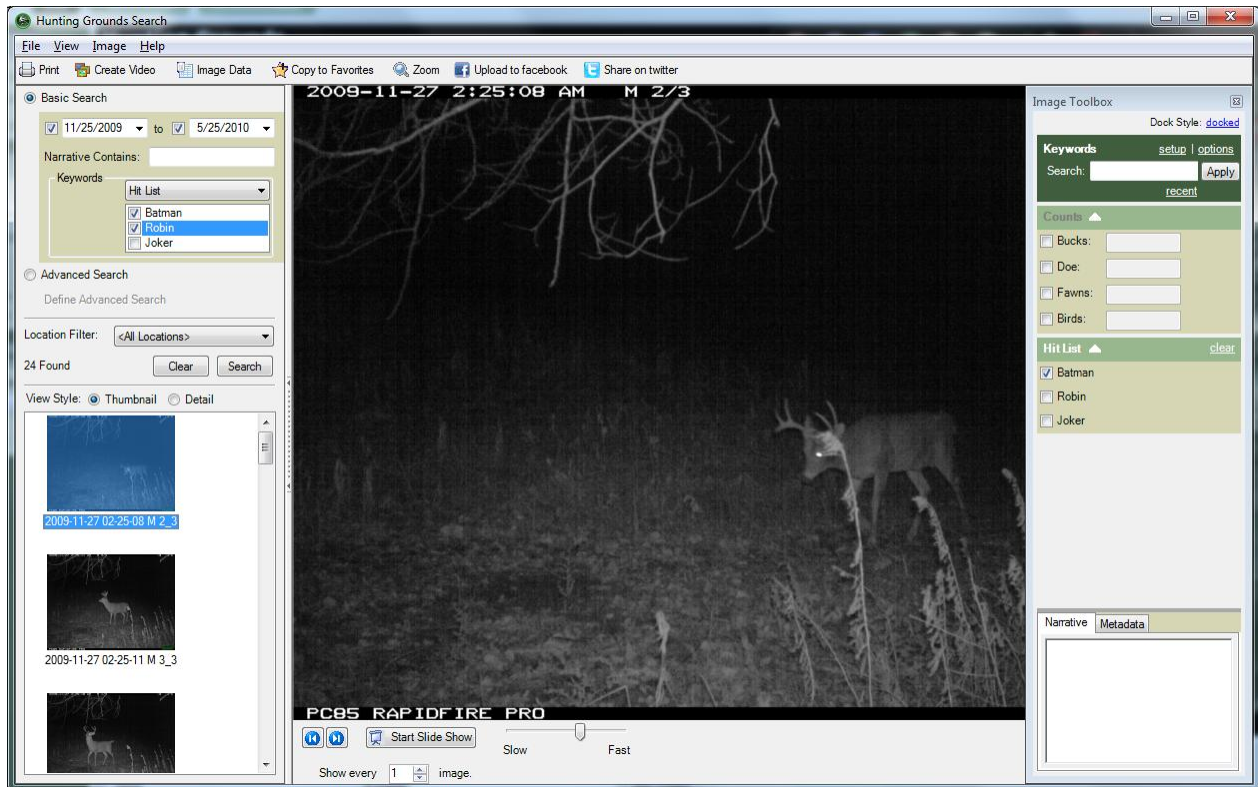


Or, from the **Site** drop-down menu, select **Search Site**.

- To search all images in the current location, from the **Location** drop-down menu, select **Search Location**. Or, in the **Camera Location** Task Pane menu (hidden by default), click **Search Location**.

Tip: You can also click the **Other** button in the bottom right corner of "BuckView," and from the menu that appears, select **Search Location**.

You can also start a search from within the "Viewer" (see [View Images](#)).



The title of the search window is "*Site* Search" (where *Site* is the name of the current site) if you're searching images in all locations in the current site, and "*Location* Search" (where *Location* is the name of the current location) if you're

searching images from the current location. Images that you find in searches in this window are from the current site or current location only, as noted in the title of the window.

Note: In *site searches*, you can choose to limit your search to locations within the site using the **Location Filter**. In *location searches*, you can only search the location you selected.

Note: You can adjust the size of the *left* section of the search, and hide or display this section as well (see [Viewing and Managing Your Images](#)).

There are 2 ways to search a Site or Location: **Basic Search** or **Advanced Search**.

Basic Search

1. Choose whether to limit the search to a certain Date Range. If so, check the box by the Start Date and/or End Date to limit your search to images within that time frame.
2. To search any of the Notes you may have added to your images, enter the text into the Notes Contain field.
3. If you want to limit the search to only images containing bucks on your Hit List, choose Hit List in the Tagging dropdown box and then check each Hit List buck that you wish to include.

Alternatively, you can search only the images where you have entered Count data. Choose Counts from the Tagging dropdown and the check each species you would like to search. The results will only include images where you have marked that 1 or more of these species show in the image.

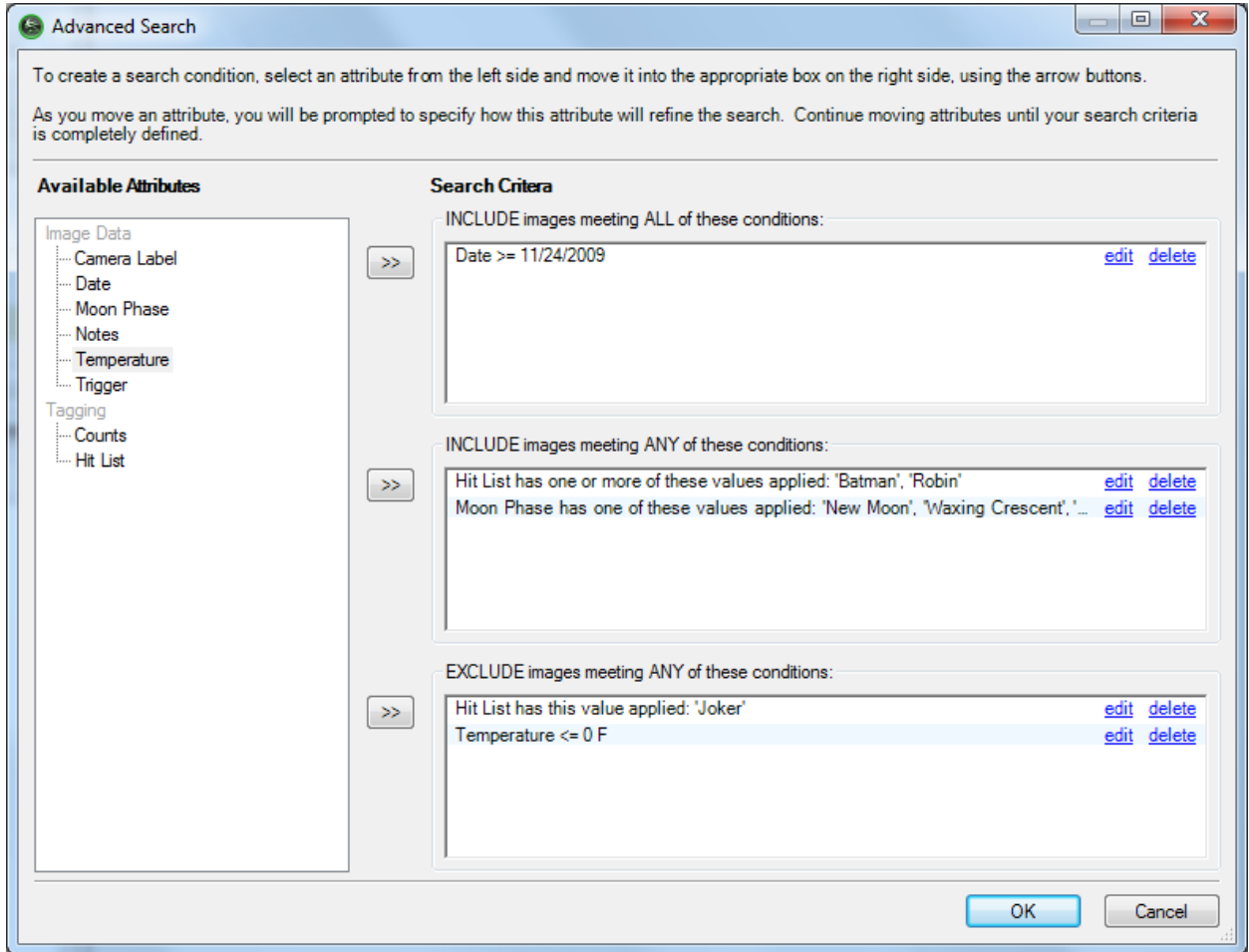
4. *If you're searching a site* and want to limit your search to a location within the site to search, select that location from the list in **Location Filter**.

If you're searching a location, the **Location Filter** is not available.

5. Click **Search** to perform your search. The total number of images found that match your search is displayed above the search results area, and a full-size version of the first image found is displayed to the right of the search section.

Advanced Search

1. Choose the Advanced Search radio button.
2. Click on Define Advanced Search to open the Advanced Search dialog.



3. Choose any Image Data field or Tagging field on the left.
4. Click one of the double-arrow buttons to move the selected search field into one of the 3 search groups:
INCLUDE images meeting ALL of these conditions (*the image must satisfy every condition in this list*)
INCLUDE images meeting ANY of these conditions (*the image must satisfy only 1 condition in this list*)
EXCLUDE images meeting ANY of these conditions (*the image must not have ANY of the conditions in this list*)
5. Click OK to close the Advanced Search window and execute the Search.
6. *If you're searching a site* and want to limit your search to a location within the site to search, select that location from the list in **Location Filter** and click Search to re-run the last search.

*If you're searching a location, the **Location Filter** is not available.*

Search Results

Images can be listed in *thumbnail view* (by image name, with a reduced-size version of the image also displayed) or *detail view* (by image name):

- To list your images in detail view, select **Detail** for the **View Style** at the top of the list of search results, or from the **View** drop-down viewer menu, select **Detail**.
- To list your images in thumbnail view, select **Thumbnail** for the **View Style**, or from the **View** drop-down menu, select **Thumbnail**.

Note: You can adjust the size of the *left* section of the search, and hide or display this section as well (see [Viewing and Managing Your Images](#)).

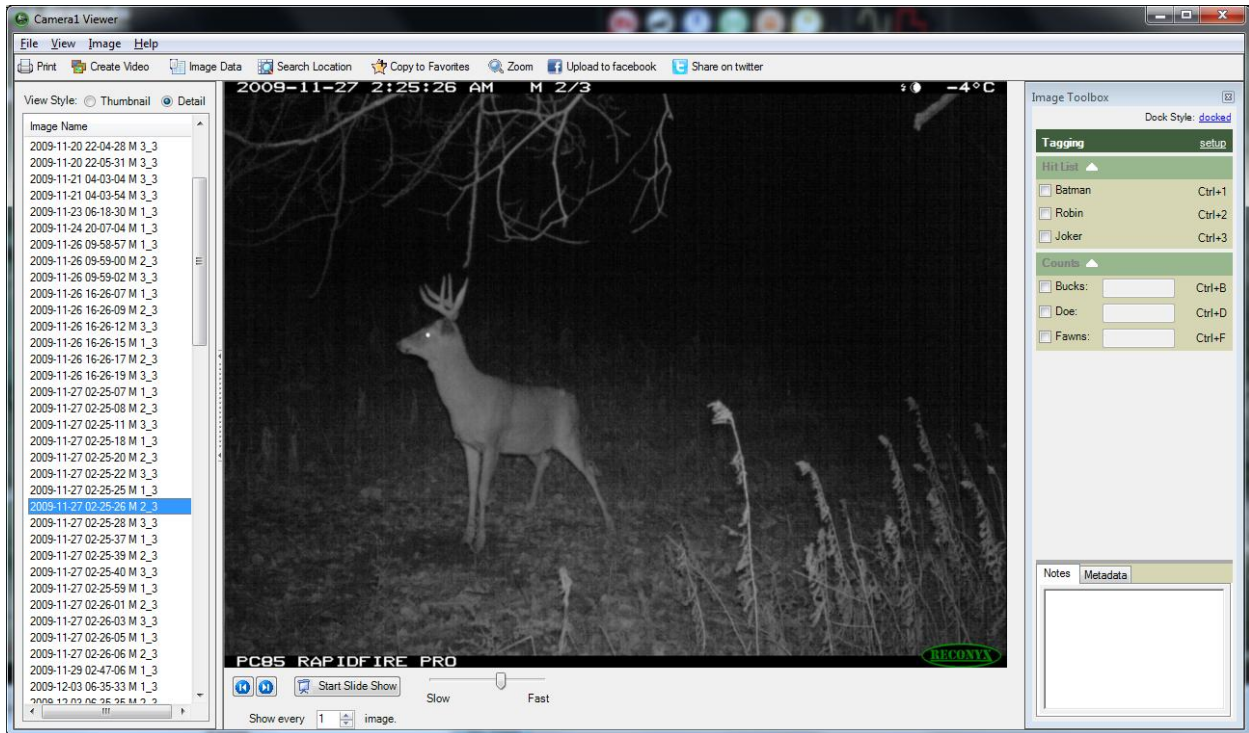
Tip: If you're searching a site with multiple locations, list your images by detail view so that the location of each image found in the search is also displayed (as shown in the preceding example).

Tip: To clear the results of your most recent search, click **Clear**.

Note: When you're viewing images in your search results, you can view any image as full size on the right side of the search window, move through images in the list using the navigation buttons underneath the full size image display, display images as a slideshow, zoom in and out on images, copy images to your favorites, save images to another folder on your computer, export image data, move or copy images to another *location*, and delete images. All of these tasks are *the same* as those described in [View Images](#).


Tag Images and Manage Image Data

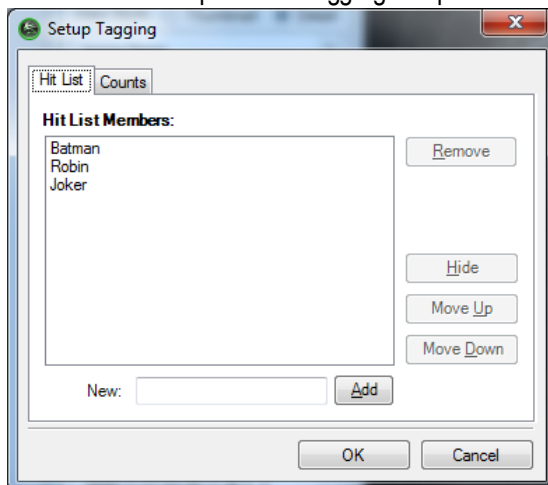
Click the **Image Data** button  **Image Data** to open the Image Toolbox.



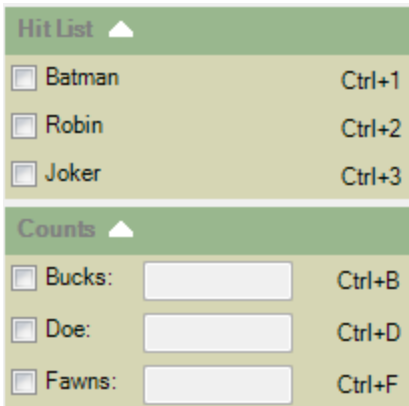
The Image Toolbox has three sections:

1. Toolbox Controls/Setup:

- The  button is used to close the Image Toolbox.
- The [docked](#) link is used to control whether the Image Toolbox is docked/anchored within the Image Viewer or is allowed to “float” and be moved/positioned independently of the Image Viewer.
- The [setup](#) link opens the Tagging setup window to allow you to customize your Hit List and Counts:



2. Hit List and Counts:



- The ▲ ▼ buttons are used to collapse or expand each section.
- The checkboxes are used to “Tag” an image to mark that it contains the selected Hit List buck. The Hit List page in the BuckView main window will display all of your Hit List bucks with a thumbnail image of each and counts showing how many images have been tagged with that buck at all of your sites and locations with links to quickly view just those images.

Tip: The first 9 Hit List bucks have keyboard shortcuts of Ctrl+# that allow you to check/uncheck the buck without using your mouse.

- The Counts section can be used to gather census about your property. You can “Tag” each image that contains the selected species and enter a count of how many animals are in the image.

Tip: The predefined values of Bucks, Does and Fawns include keyboard shortcuts (such as Ctrl+B) that you can use to select the checkbox and increment the count. So pressing Ctrl+B 3 times would check the Bucks checkbox and set the count to '3'. (Note: Ctrl+Shift+B will decrease the count)

3. Notes / Metadata

Notes are any text you wish to add to your images.

Metadata is data about the image that was captured by your RECONYX camera.

Create Video

Select a group of images and create a video clip using any of the images you've stored in a location in "BuckView." The video you create is saved as an .AVI (Audio Video Interleave) video and can be viewed using a number of widely available media players, including RealPlayer® and Microsoft Windows Media® Player.

Within the "Viewer," select the images you want to include in the video clip (the process of selecting multiple images is described in [View Images](#)).

Once you have selected the images you want to use to create your video, from the **Image** drop-down menu, select **Create Video**, browse to the folder you want to save the video in, enter the file name you want to give the video, and click **Save**. The progress of creating your video is displayed.

Tip: You can also click the **Create Video** toolbar button. 

To view your video, browse to the folder where you saved it and double-click the file. The video will play in your default video player.

Tip: The default location where videos are stored is your My Favorite RECONYX Images folder; if you save your videos in this folder, you can access them quickly from BuckView by opening your Favorites folder (see [Favorites](#)).

The video clip file can be attached to an email for sharing images with friends and colleagues and/or inserted into presentation tools such as Microsoft PowerPoint®.


Note: Video files can become quite large depending upon the number of images included in the video. As a guide, 10 images from the RapidFire camera will result in a video file of about 500KB, and 20 images will create a video file around 1MB in size.

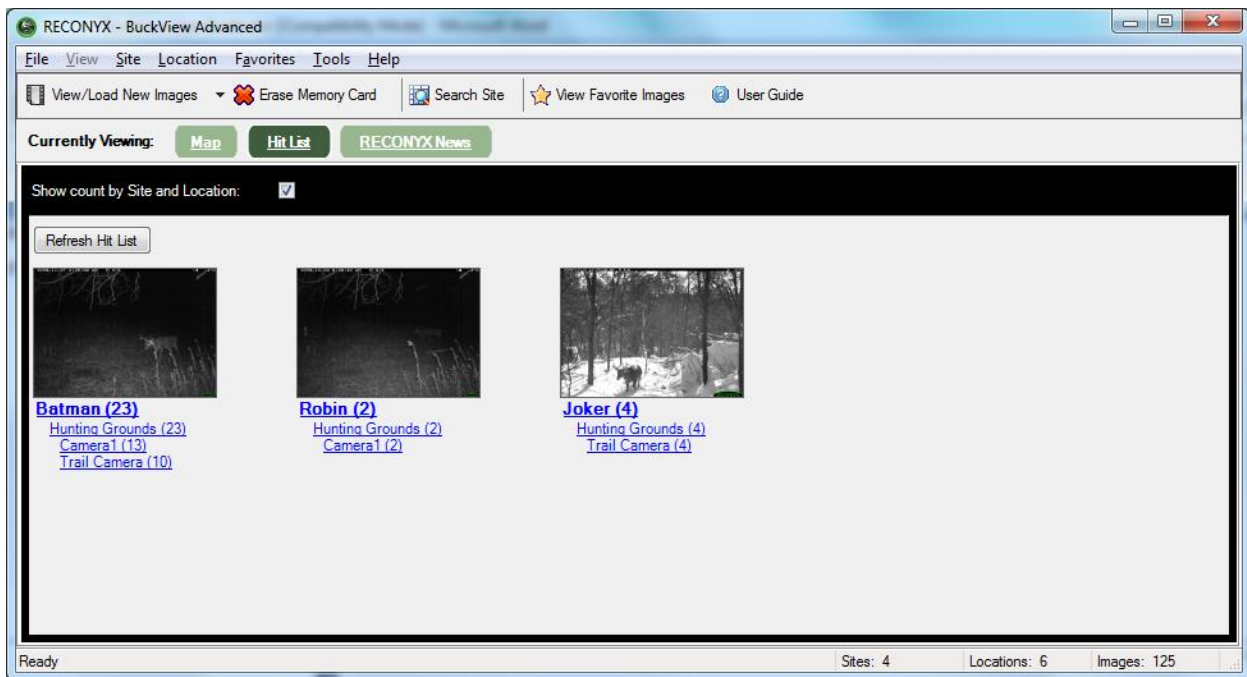
Hit List

Hit List is a simple way to find / view the images of your favorite bucks.

In any image viewer (Viewer, Search, Import), use the Image Toolbox to setup the names of the bucks you track closely.

When you are reviewing your images, be sure to “Tag” the images that contain one or more of your Hit List bucks.

From the BuckView main window, click on the  button to go to the Hit List control. The Hit List control lists all of your Hit List bucks with a sample thumbnail photo of each:



RECONYX News

The RECONYX News page will keep you up-to-date with the latest happenings at RECONYX, such as camera sales, new product announcements, photo submission contests and more.

Warranty and Safety Information

Satisfaction Guarantee

RECONYX offers a 30-day satisfaction guarantee for all products that are purchased directly from RECONYX. If, for any reason, you are not completely satisfied with products purchased from RECONYX, you may return the products within 30 days of purchase for a full refund of the purchase price and applicable taxes.

This guarantee is subject to the following conditions:

- You must obtain a Return Material Authorization (RMA) number for all products returned under this money-back guarantee (contact RECONYX for an RMA *before* returning products).
- You must return the original CDs containing RECONYX software and will be required to sign an affidavit indicating that all copies of RECONYX software have been removed from your computers and any physical copies of the software have been destroyed.
- Shipping charges will not be refunded.

Limited Warranty

Software products are licensed to Buyer under the terms of the applicable RECONYX software license (contained within installation programs). If Buyer wishes to review the software license agreement before purchasing products from RECONYX, a copy of the software license may be obtained by request.

Buyer must obtain a Return Material Authorization (RMA) number from RECONYX before returning any product(s) for repair or replacement. If RECONYX concludes that a returned product is not defective, Buyer will be notified, the product will be returned to Buyer at Buyer's expense, and Buyer may be charged for RECONYX's examination and testing of the product.

This limited warranty is the sole warranty for software products offered by RECONYX and RECONYX shall not be liable for any amounts for said products except in compliance with this warranty.

Troubleshooting and Technical Support

For answers to questions about BuckView for which you cannot find answers in this User Guide, please check the RECONYX web site (www.reconyx.com) to see if the information you are looking for is covered in the on-line "Frequently Asked Questions" (FAQ) section.

If after searching this User Guide and checking the FAQ's on the web, you still have questions that you need assistance in answering, please email RECONYX technical support (support@reconyx.com) or call us at 866-493-6064 and ask for Technical Support. We will do everything we can to help you get the most from BuckView.

Troubleshooting Your BuckView Software

*If you cannot see your customized Image Data (e.g. in Microsoft Excel®) after exporting tagged images, you must change the alignment of the cells containing keywords in order to make the data visible. The default alignment when opening a .CSV file is **Bottom**. Select the cells for which you wish to change the alignment and from the **Format** menu, select **Cells**. In the window that appears, click the **Alignment** tab. Change the **Vertical** setting to a more appropriate value, **Top**, for example. Click **OK** and your data should appear in the selected cells.*

If you receive error messages while loading new images, this could be the result of either bad images or incompatibility. If you see an error message that says, "Error Importing Image <filename> Cause: Error reading JPG Comment", this would indicate a bad image was skipped. If the error message reads, "Error Importing Image <filename> Cause: Image could not be imported due to version incompatibility." this would indicate that the images you are trying to load were captured with a camera that is incompatible with "BuckView."

If you receive error messages while loading images from another folder - it may be because there are too many characters in the path to the files (more than 130 characters). To read more about this known issue or to obtain a fix, go [here](#). A simple solution is to rename or move the folder you are trying to load from. If the full path to the folder can be shortened to fewer than 130 characters, this problem will go away. If this does not solve your problem with loading images from another folder, contact Technical Support.

If you cannot erase your memory card, check with computer technical support personnel to be sure you have permissions set on your computer to allow you to format removable media. The instructions below explain how the appropriate privileges can be assigned.

Determine the version of your operating system. Follow the steps outlined below for your operating system.

Windows XP Home Edition

From a user account with Administrator privileges:

Click **Start**, click **Run**. Enter **regedit** at the prompt.

Browse to: **HKEY_LOCAL_MACHINE\Software\Microsoft\WindowsNT\CurrentVersion\Winlogon**

On the right side, find **AllocateDASD**.

Double Click **AllocateDASD**, and change the value to 2. Click **OK**.

Close the Registry Editor.

The next time the user logs in, they will be able to erase their memory card.

Window XP Professional Edition

From a user account with Administrator privileges:

Click **Start**, click **Run**. Enter **mmc** at the prompt.

Under **File**, click on **Add/Remove Snap-in...**

On the **Add/Remove Snap-in** window, click **Add**.

On the **Add Standalone Snap-in** window, choose **Group Policy** from list and click **Add**. In the wizard window that appears, make sure that **Local Computer** is typed in the **Group Policy Object** text box and click **Finish**.

Click **Close** on the **Add Standalone Snap-in** window.

Click **OK** on the **Add/Remove Snap-in** window.

Under **Local Computer Policy**, browse to the following branch:

Computer Configuration\Windows Settings\Security Settings\Local Policies\Security Options

Rightclick on **Devices: Allowed to format and eject removable media** and click **Properties**.

In the **Local Security Setting** box, click the group you want, and then click **OK**.

Your choices are:

Administrators - Only Administrators can format removable media.

Administrators and Power Users - Admin and Power users can format removable media.

Administrators and Interactive Users - Administrators and Interactive (Limited users) can format removable media.

Quit MMC, click **Start**, and then click **Run**. Enter **gpupdate** at the prompt.

The next time the user logs in, they will be able to erase their memory card.

Copyright and Trademark Information

BuckView™ Advanced User Guide, September 2011 rev 0914
Copyright© 2011

RECONYX, Inc.

3828 Creekside Lane, Suite 2

Holmen, WI 54636

866-493-6064

www.reconyx.com

This manual provides detailed instructions for viewing and managing with BuckView Advanced software.

BuckView, RapidFire and HyperFire are a trademarks of RECONYX.

Other trademarks and registered trademarks referred to in this document:

- CompactFlash is a registered trademark of the CompactFlash Association.
- Excel, Microsoft, PowerPoint, Windows, and Windows Media are registered trademarks of Microsoft® Corporation.
- RealPlayer is a registered trademark of RealNetworks, Incorporated.
- Google Maps is a registered trademark of Google Inc.

All other trademarks and copyrights referred to are the property of their respective owners